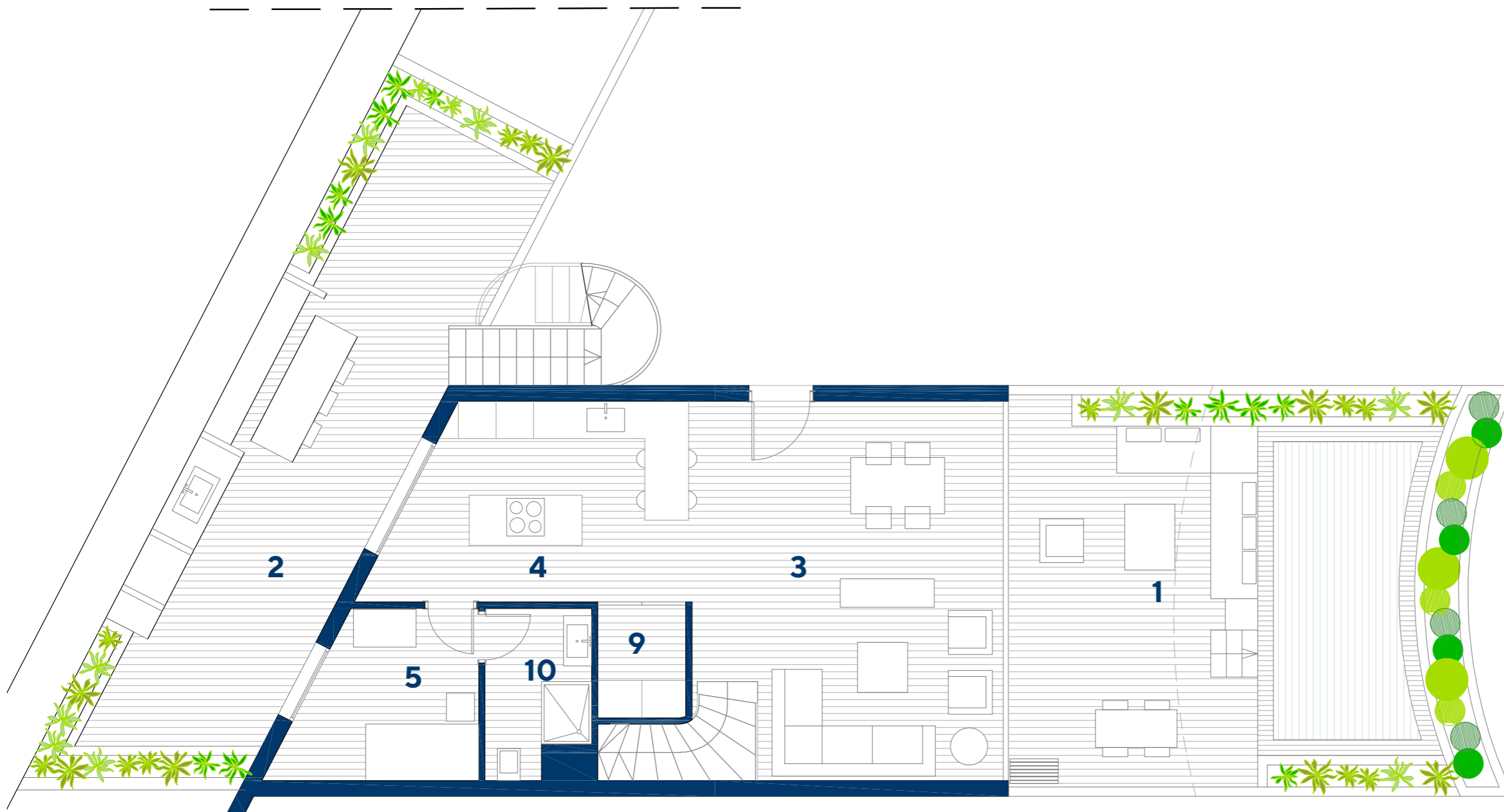


Eighth Floor: BLOCK VIII : APARTMENT NUMBER B8-8



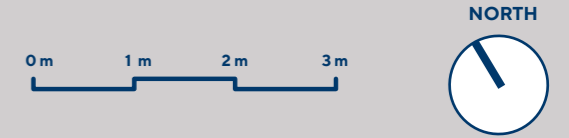
SURFACES		B8-8
Apartment.....	105,46 m ²	
Terrace.....	124,00 m ²	
Garden.....	39,00 m ²	
TOTAL.....	268,46 m²	

KEY	
1.	TERRACE
2.	GARDEN
3.	LIVING ROOM - DINING ROOM
4.	KITCHEN
5.	BEDROOM 1
6.	BEDROOM 2
7.	BEDROOM 3
8.	WALK-IN CLOSET
9.	LAUNDRY ROOM
10.	BATHROOM 1
11.	BATHROOM 2

CULLERA HILLS YOUR WINDOW TO THE MEDITERRANEAN

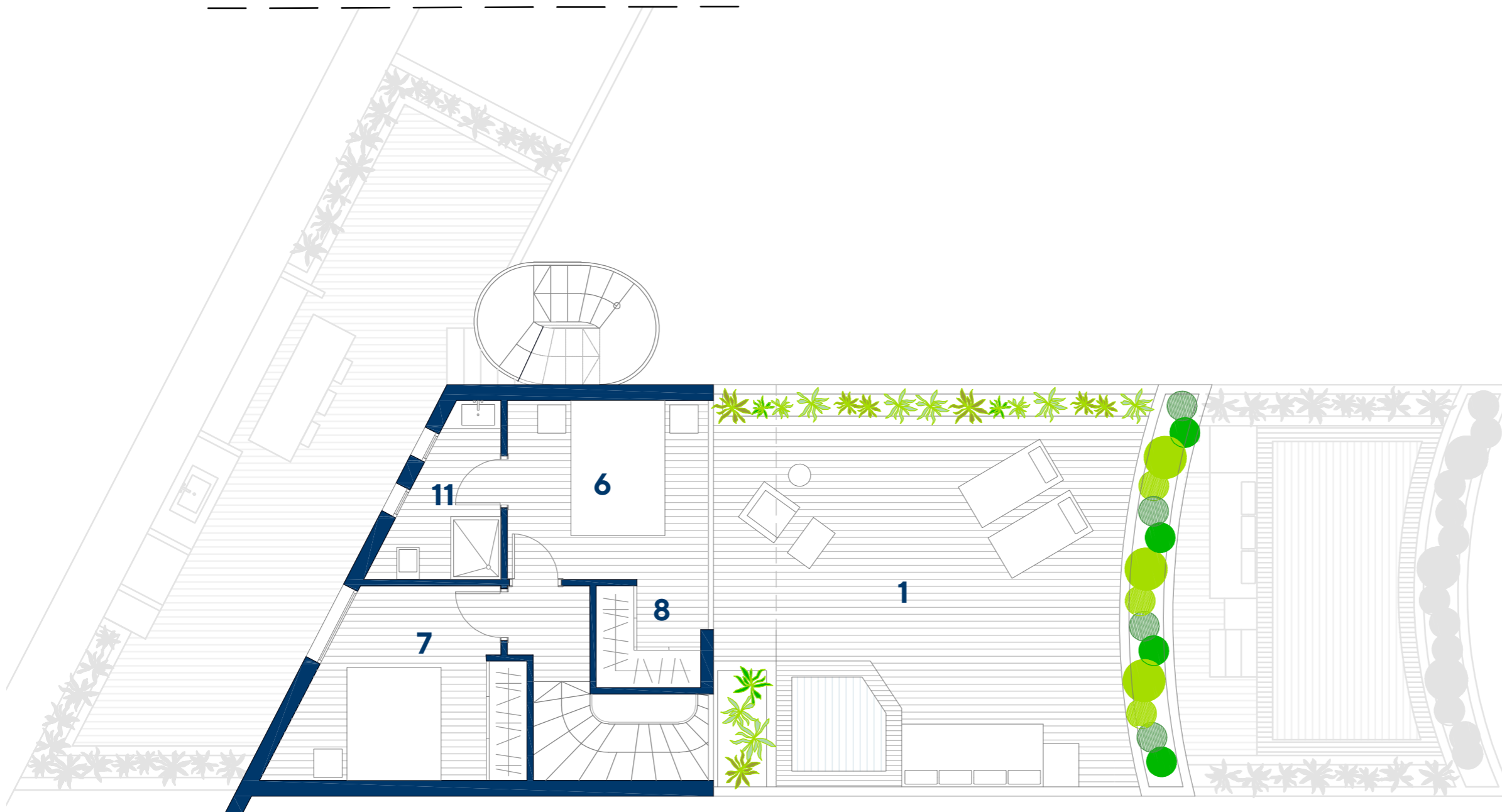
Non-contractual images provided for purely illustrative purposes and subject to technical, legal or commercial modifications by the official works supervisors or competent authorities. The computer graphics of the facades, common elements and other spaces are provided as guidelines and may have to be checked or modified in the technical project. The furniture in the home interior graphics are not included and the fittings in the homes will be as stated in the corresponding building specifications report.

All the information provided and the documentation delivered shall be in keeping with the provisions of Royal Decree 515/1989 and all other present or future supplementary regulations, whether enacted on the state or autonomic levels.



Ninth Floor: BLOCK VIII : APARTMENT NUMBER B8-8

SURFACES	B8-8
Apartment.....	105,46 m ²
Terrace.....	124,00 m ²
Garden.....	39,00 m ²
TOTAL.....	268,46 m²

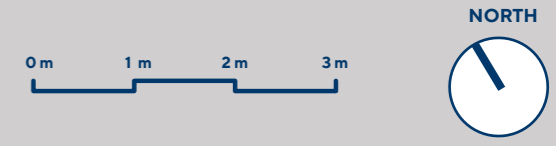


KEY	
1.	TERRACE
2.	GARDEN
3.	LIVING ROOM - DINING ROOM
4.	KITCHEN
5.	BEDROOM 1
6.	BEDROOM 2
7.	BEDROOM 3
8.	WALK-IN CLOSET
9.	LAUNDRY ROOM
10.	BATHROOM 1
11.	BATHROOM 2

CULLERA HILLS YOUR WINDOW TO THE MEDITERRANEAN

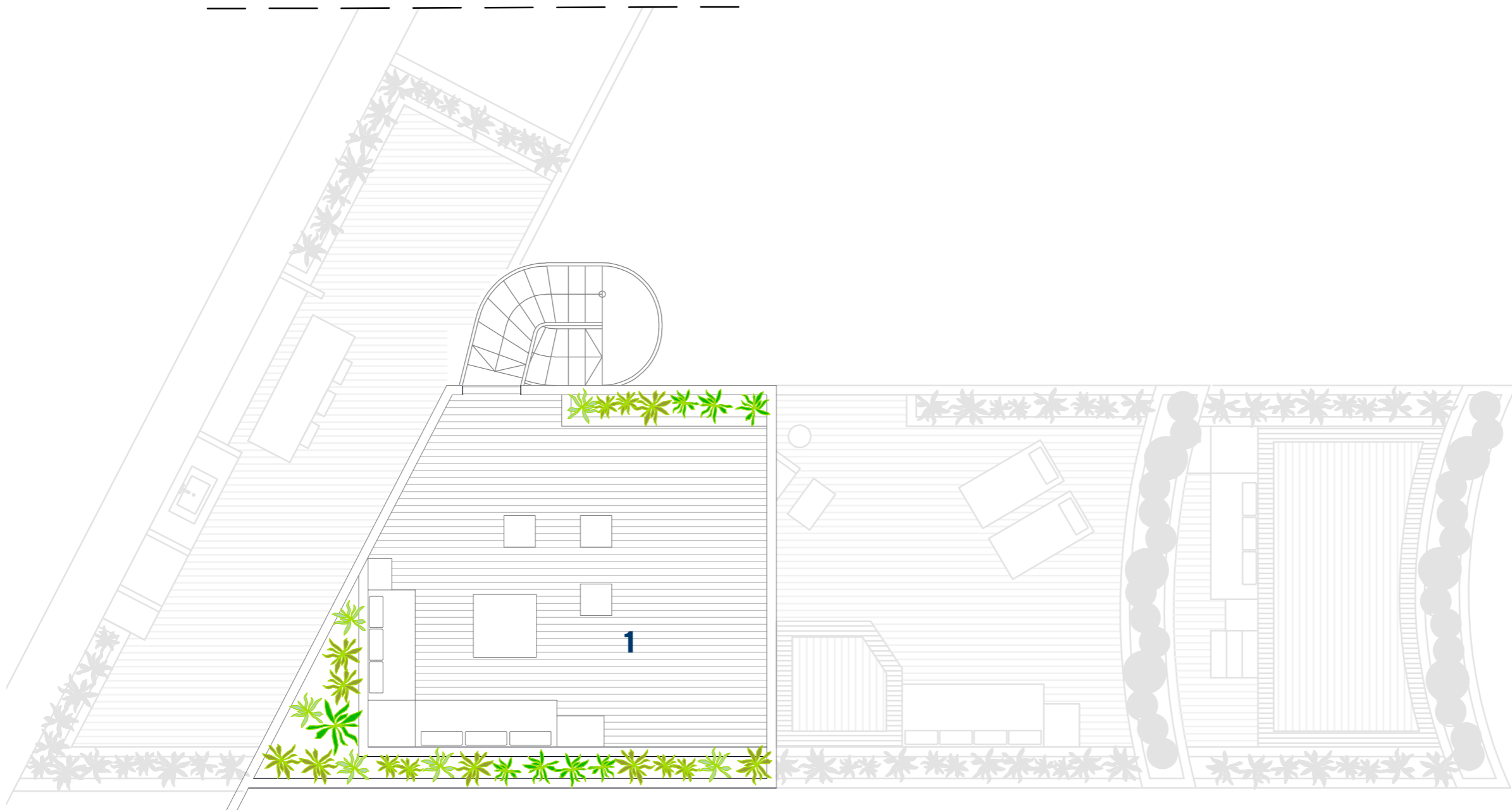
Non-contractual images provided for purely illustrative purposes and subject to technical, legal or commercial modifications by the official works supervisors or competent authorities. The computer graphics of the facades, common elements and other spaces are provided as guidelines and may have to be checked or modified in the technical project. The furniture in the home interior graphics are not included and the fittings in the homes will be as stated in the corresponding building specifications report.

All the information provided and the documentation delivered shall be in keeping with the provisions of Royal Decree 515/1989 and all other present or future supplementary regulations, whether enacted on the state or autonomic levels.



Tenth Floor: BLOCK VIII : APARTMENT NUMBER B8-8

SURFACES	B8-8
Apartment.....	105,46 m ²
Terrace.....	124,00 m ²
Garden.....	39,00 m ²
TOTAL.....	268,46 m²



KEY	
1.	TERRACE
2.	GARDEN
3.	LIVING ROOM - DINING ROOM
4.	KITCHEN
5.	BEDROOM 1
6.	BEDROOM 2
7.	BEDROOM 3
8.	WALK-IN CLOSET
9.	LAUNDRY ROOM
10.	BATHROOM 1
11.	BATHROOM 2

CULLERA HILLS YOUR WINDOW TO THE MEDITERRANEAN

Non-contractual images provided for purely illustrative purposes and subject to technical, legal or commercial modifications by the official works supervisors or competent authorities. The computer graphics of the facades, common elements and other spaces are provided as guidelines and may have to be checked or modified in the technical project. The furniture in the home interior graphics are not included and the fittings in the homes will be as stated in the corresponding building specifications report.

All the information provided and the documentation delivered shall be in keeping with the provisions of Royal Decree 515/1989 and all other present or future supplementary regulations, whether enacted on the state or autonomic levels.